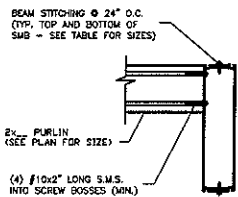
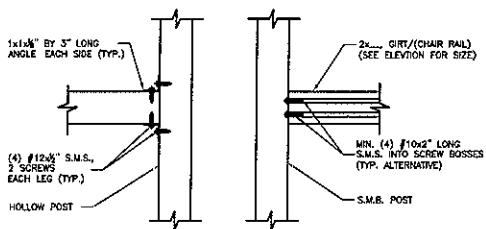


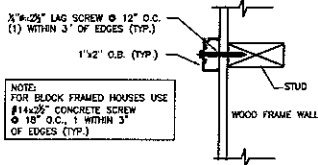
PLAN - TYPICAL ROOF BRACE TO BEAM CONNECTION



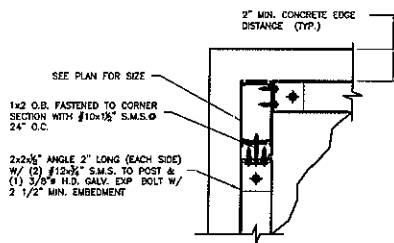
PURLIN TO ROOF BEAM CONNECTION DETAIL



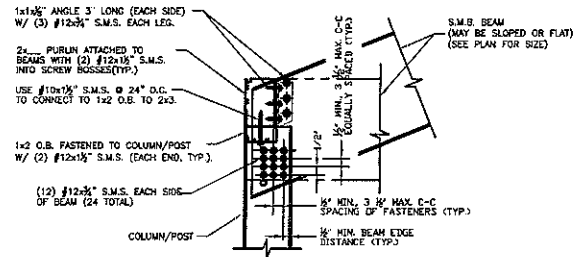
CHAIR RAIL / GIRT TO POST CONNECTION DETAIL



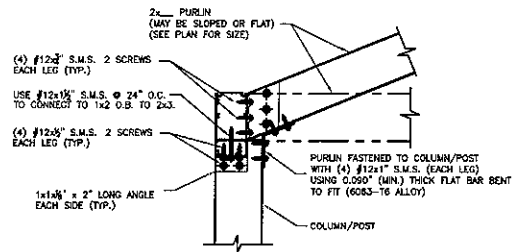
TYPICAL SCREEN EDGE TO STRUCTURE CONNECTION DETAIL



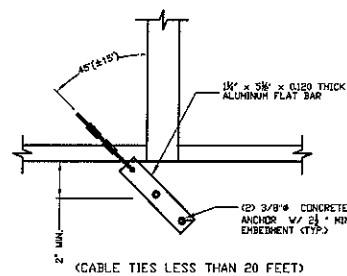
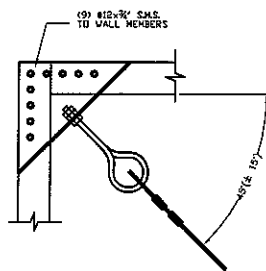
CORNER POST / COLUMN TO FOUNDATION CONNECTION DETAIL



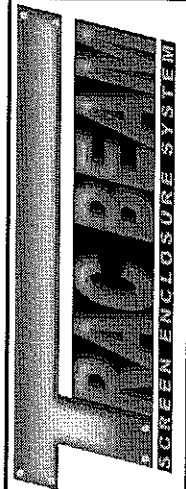
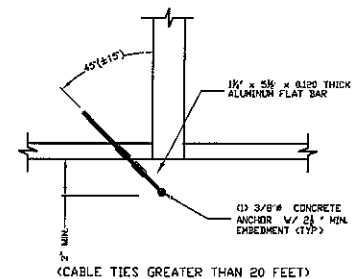
MAIN POST / COLUMN TO ROOF BEAM CONNECTION DETAIL



SIDEWALL POST / COLUMN TO PURLIN CONNECTION DETAIL



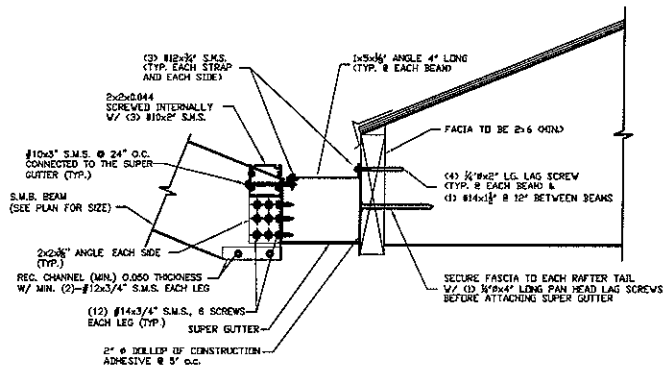
CABLE BRACE DETAIL



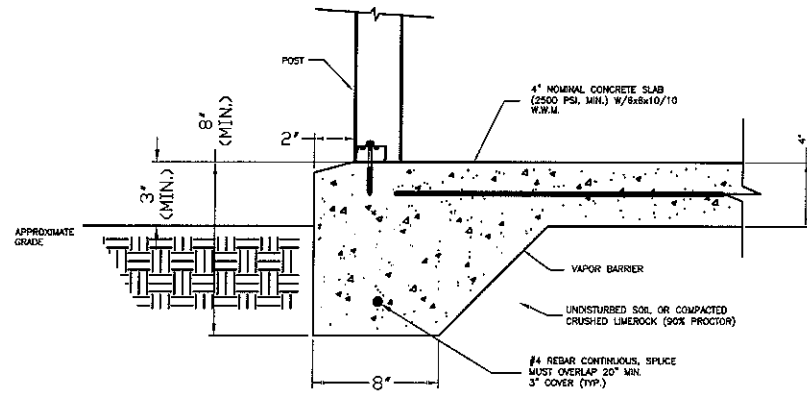
Pool Enclosure Collective, LLC
 Manufactures Recommended Trac Beam™
 Standard Installation Details
 For Screen Enclosures (FL# 7350 & 9328)

BUILDING STRENGTH WITH INTEGRITY

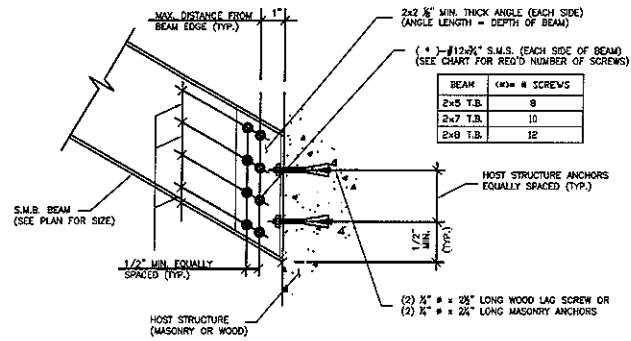
P.O. Box 10039
 Tampa, FL 33679
 Tel: (813) 874-6500
 Fax: (813) 874-5959



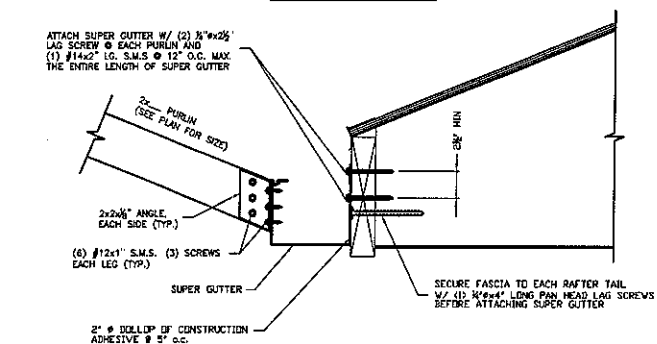
ROOF BEAM TO SUPER GUTTER CONNECTION DETAIL



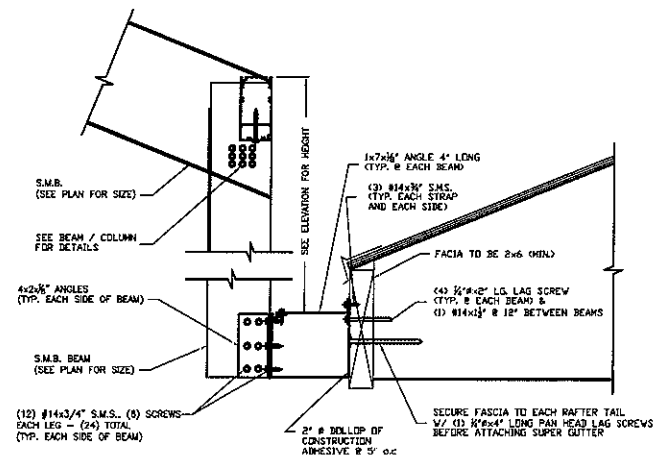
FOUNDATION SLAB/POST DETAIL



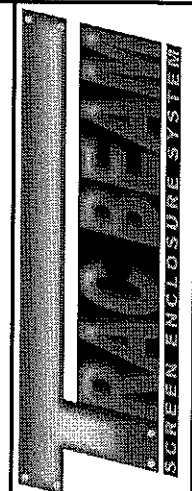
BEAM TO HOST STRUCTURE DETAIL



PURLIN TO SUPER GUTTER CONNECTION DETAIL



ROOF TRANSOM (RISER) WALL CONNECTION DETAIL



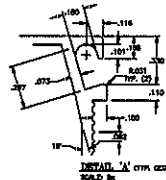
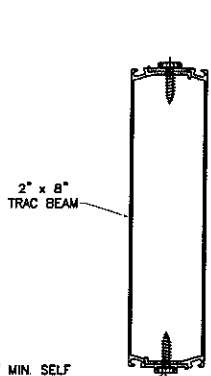
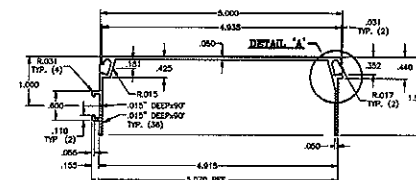
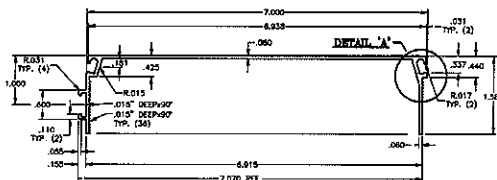
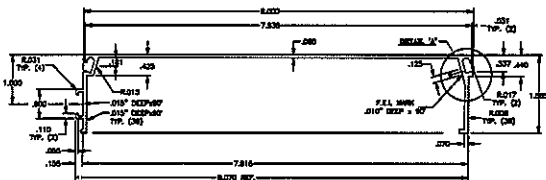
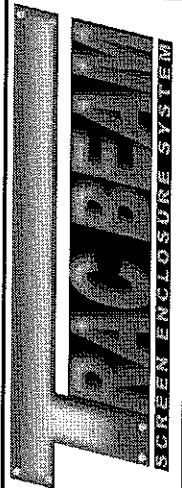
Pool Enclosure Collective, LLC
 Manufactures Recommended Trac Beam™
 Standard Installation Details
 For Screen Enclosures (FL# 7350 & 9328)

BUILDING STRENGTH WITH INTEGRITY

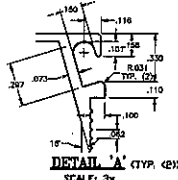
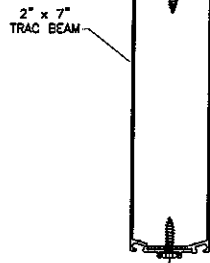
P.O. Box 10039
 Tampa, FL 33679
 Tel: (813) 874-5500
 Fax: (813) 874-5559

Pool Enclosure Collective, LLC

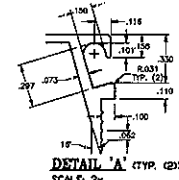
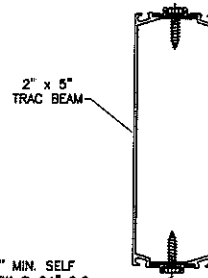
Trac Beam (FL State Product Approval #7350)



#10 x 3/4" MIN. SELF DRILLING SCREW @ 24" O.C. (TYP TOP AND BOTTOM OF SMB)



#10 x 3/4" MIN. SELF DRILLING SCREW @ 24" O.C. (TYP TOP AND BOTTOM OF SMB)



2" x 8" TRAC SELF-MATING BEAM (SMB)
(patent pending)

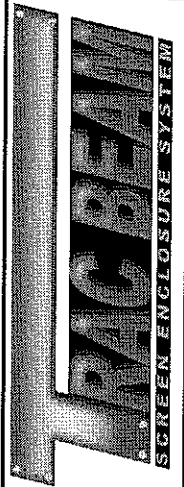
2" x 7" TRAC SELF-MATING BEAM (SMB)
(patent pending)

2" x 5" TRAC SELF-MATING BEAM (SMB)
(patent pending)

Pool Enclosure Collective, LLC
Manufactures Recommended Trac Beam™
Standard Installation Details
For Screen Enclosures (FL# 7350 & 9328)

BUILDING
STRENGTH
WITH
INTEGRITY

P.O. Box 10039
Tampa, FL 33679
Tel: (813) 874-5800
Fax: (813) 874-5839



2x5 TRAC BEAM (ROOF BEAM SPAN)					
BEAM TO BEAM SPACING (Ft)	110 mph	120 mph	130 mph	140 mph	150 mph
5' O.C.	> 25'	> 25'	> 25'	> 25'	24.79'
6' O.C.	> 25'	> 25'	> 25'	24.66'	23.86'
7' O.C.	> 25'	> 25'	24.79'	23.86'	22.93'
8' O.C.	> 25'	> 25'	24.13'	23.06'	22'

2x7 TRAC BEAM (ROOF BEAM SPAN)					
BEAM TO BEAM SPACING (Ft)	110 mph	120 mph	130 mph	140 mph	150 mph
5' O.C.	39.32'	39.32'	36.03'	32.73'	29.45'
6' O.C.	36.68'	36.68'	32.73'	28.8'	24.99'
7' O.C.	34.05'	34.05'	29.45'	24.98'	24.55'
8' O.C.	31.42'	31.42'	26.16'	24.61'	24.11'

2x8 TRAC BEAM CLEAR SPAN (FLAT ROOF)					
BEAM TO BEAM SPACING (Ft)	110 mph	120 mph	130 mph	140 mph	150 mph
5' O.C.	40.0'	40.0'	40.0'	40.0'	36.0'
6' O.C.	40.0'	40.0'	40.0'	37.0'	35.0'
7' O.C.	40.0'	40.0'	38.0'	35.5'	34.0'
8' O.C.	40.0'	38.0'	36.0'	34.2'	32.0'

2x5 TRAC BEAM (COLUMN HEIGHT)					
BEAM TO BEAM SPACING (Ft)	110 mph	120 mph	130 mph	140 mph	150 mph
5' O.C.	20.81'	19.47'	17.48'	15.47'	13.83'
6' O.C.	19.07'	17.48'	15.07'	13.57'	12.78'
7' O.C.	17.34'	15.48'	13.57'	12.65'	11.74'
8' O.C.	15.61'	13.83'	12.78'	11.73'	10.69'

2x7 TRAC BEAM (COLUMN HEIGHT)					
BEAM TO BEAM SPACING (Ft)	110 mph	120 mph	130 mph	140 mph	150 mph
5' O.C.	23.54'	22.92'	21.98'	21.03'	20.09'
6' O.C.	22.72'	21.97'	20.84'	19.71'	18.58'
7' O.C.	21.91'	21.03'	19.70'	18.39'	17.08'
8' O.C.	21.10'	20.09'	18.58'	17.08'	15.58'

2x8 TRAC BEAM SPAN (MANSARD ROOF)					
BEAM TO BEAM SPACING (Ft)	110 mph	120 mph	130 mph	140 mph	150 mph
5' O.C.	52.0'	52.0'	52.0'	52.0'	47.0'
6' O.C.	52.0'	52.0'	52.0'	50.0'	46.0'
7' O.C.	52.0'	52.0'	52.0'	47.5'	44.8'
8' O.C.	52.0'	50.0'	47.0'	45.0'	42.8'

General Notes:

1. Refer to Florida Product Approval #FL7350 & #FL9328 for project specific requirements to be used by design professional.
2. Drawings are illustrative purposes only.
3. Tables developed from loads in FL9328 tables which are allowable working loads and may be used without any additional reductions. Spans are based on ten feet wall height.
4. Allowable point loads and deflections are converted to allowable uniform loads and deflections using analytic and comparative analysis.
5. Allowable spans tables are based on 2004 Florida Building Code with 2006 Updates. Wind loads are based on Chapter 20 and Table 2004.4.
6. Consult a licensed design professional for use of this product information.
7. Maximum allowable deflections limits of L/60 shall be considered by design professional. L/80 in HVHZ.

2x8 TRAC SPAN (COLUMN HEIGHT)					
BEAM TO BEAM SPACING (Ft)	110 mph	120 mph	130 mph	140 mph	150 mph
5' O.C.	32.5'	30.0'	28.9'	27.7'	26.3'
6' O.C.	29.5'	28.7'	27.6'	26.3'	25.0'
7' O.C.	28.7'	27.8'	26.7'	24.9'	23.5'
8' O.C.	27.8'	26.5'	25.2'	23.4'	21.8'

Pool Enclosure Collective, LLC
 Manufactures Recommended Trac Beam™
 Standard Installation Details
 For Screen Enclosures (FL# 7350 & 9328)

BUILDING
 STRENGTH
 WITH
 INTEGRITY

P.O. Box 10039
 Tampa, FL 33679
 Tel: (813) 874-5900
 Fax: (813) 874-5956

Drawing No. - 070822

SHEET 5 OF 5